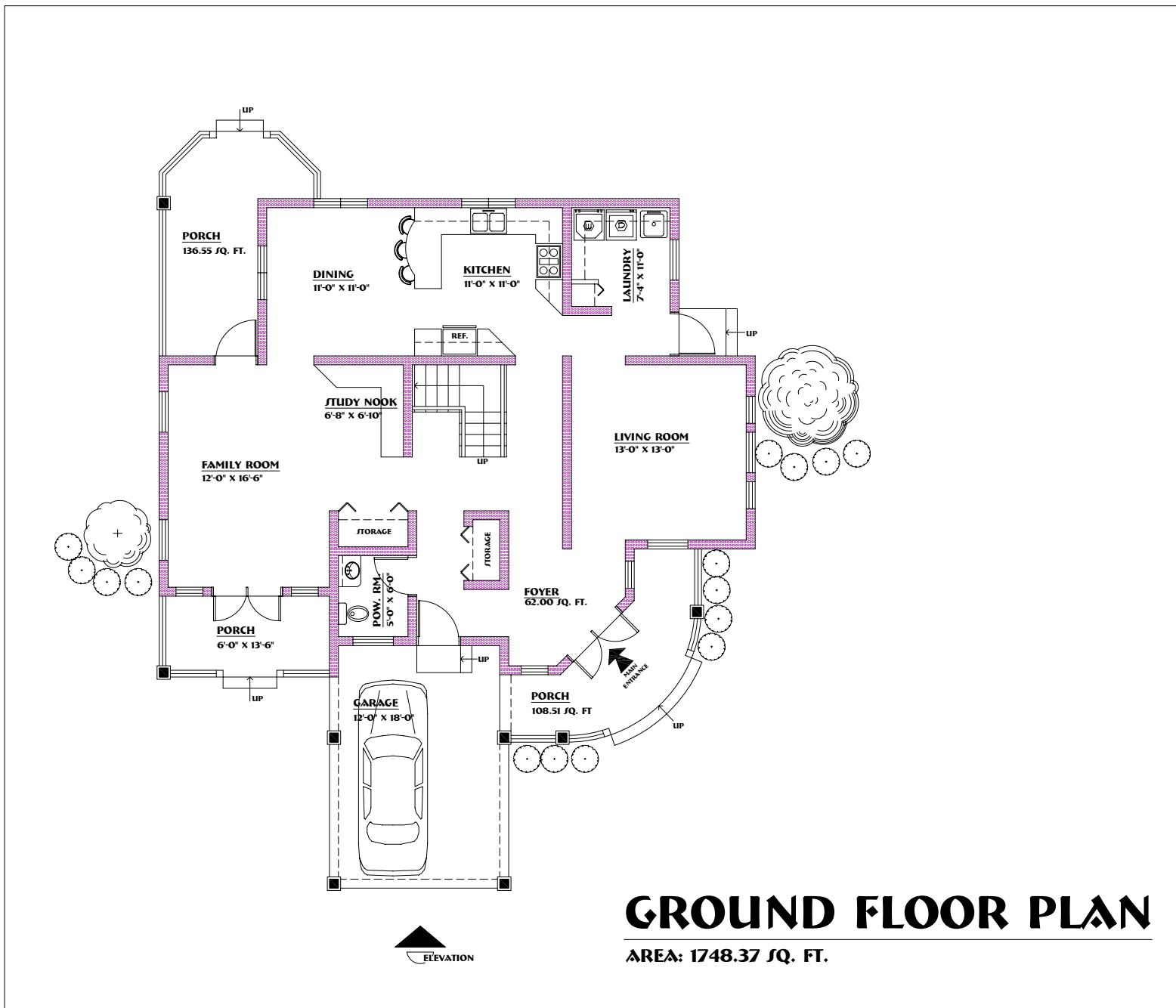


CONCEPT 5 – GROUND FLOOR PLAN



GROUND FLOOR PLAN

AREA: 1748.37 SQ. FT.

PROJECT / OWNER

SKN HOMES

SHEET TITLE

**GROUND FLOOR PLAN -
CONCEPT 5**

DATE

APRIL 2006

SHEET NO.

1

NOTES & REVISIONS

- (A) DO NOT SCALE DRAWINGS
- (B) IF IN DOUBT, CONSULT WITH ARCHITECT/DESIGNER

(C) AREAS:

GROUND FLOOR:

- LIVING SPACE: 1214.31 SQ. FT.
- PORCHES: 318.06 SQ. FT.
- GARAGE: 216.00 SQ. FT.

SUB - TOTAL AREA: 1748.37 SQ. FT.

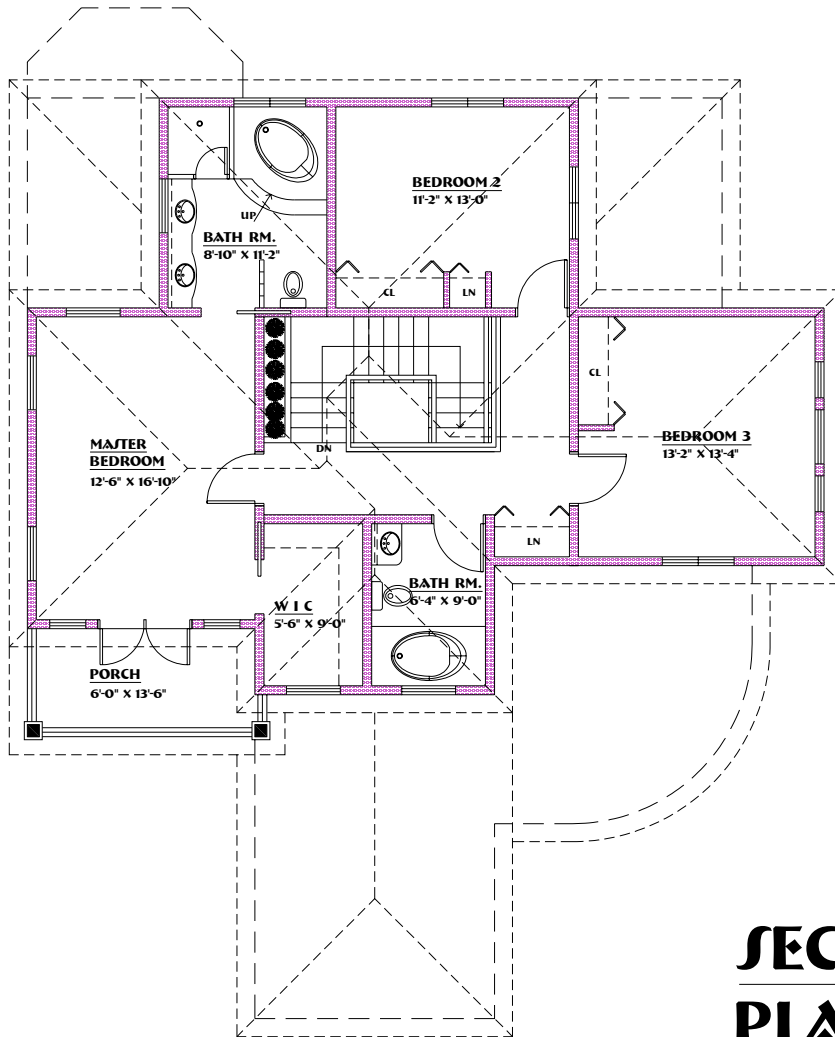
TOTAL AREA: 2840.12 SQ. FT.

J. FRAITES

Cleverly Hill, Sandy Point
St. Kitts
Tel: 869-466-6725

Email: junierfraites69@yahoo.com

CONCEPT 5: SECOND FLOOR PLAN - OPTION #1



SECOND FLOOR PLAN - OPTION #1

AREA: 1091.75 SQ. FT.

PROJECT / OWNER

SKN HOMES

SHEET TITLE

**SECOND FLOOR PLAN -
CONCEPT 5**

DATE

APRIL 2006

SHEET NO.

2

NOTES & REVISIONS

(A) DO NOT SCALE DRAWINGS
(B) IF IN DOUBT, CONSULT WITH
ARCHITECT/DESIGNER

(C) AREAS:

GROUND FLOOR:

- LIVING SPACE: 1010.75 SQ. FT.
- PORCHES: 81.00 SQ. FT.

SUB - TOTAL AREA: 1091.75 SQ. FT.

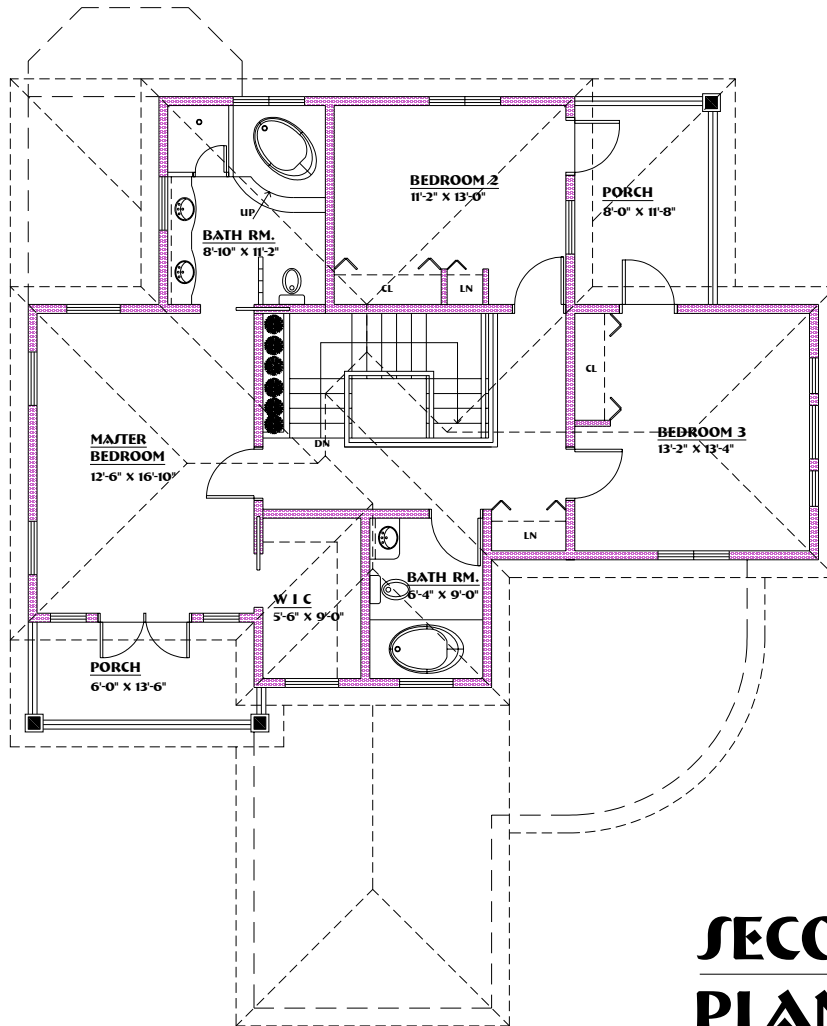
TOTAL AREA: 2840.12 SQ. FT.

J. FRAITES

Cleverly Hill, Sandy Point
St. Kitts
Tel: 869-466-6725

Email: junierfraites69@yahoo.com

CONCEPT 5: SECOND FLOOR PLAN - OPTION #2



SECOND FLOOR PLAN - OPTION #2

AREA: 1185.11 SQ. FT.

PROJECT / OWNER

SKN HOMES

SHEET TITLE

**SECOND FLOOR PLAN -
CONCEPT 5**

DATE

APRIL 2006

SHEET NO.

3

NOTES & REVISIONS

(A) DO NOT SCALE DRAWINGS
(B) IF IN DOUBT, CONSULT WITH
ARCHITECT/DESIGNER

(C) AREAS:

GROUND FLOOR:
- LIVING SPACE: 1010.75 SQ. FT.
- PORCHES: 174.36 SQ. FT.

SUB - TOTAL AREA: 1185.11 SQ. FT.

TOTAL AREA: 2933.48 SQ. FT.

J. FRAITES

*Cleverly Hill, Sandy Point
St. Kitts
Tel: 869-466-6725*

Email: junierfraites69@yahoo.com

CONCEPT 5: ELEVATION



ELEVATION

PROJECT / OWNER

SKN HOMES

SHEET TITLE

ELEVATION - CONCEPT 5

DATE

APRIL 2006

SHEET NO.

4

NOTES & REVISIONS

**(A) DO NOT SCALE DRAWINGS
(B) IF IN DOUBT, CONSULT WITH
ARCHITECT/DESIGNER**

J. FRAITES

*Cleverly Hill, Sandy Point
St. Kitts
Tel: 869-466-6725*

Email: junierfraites69@yahoo.com